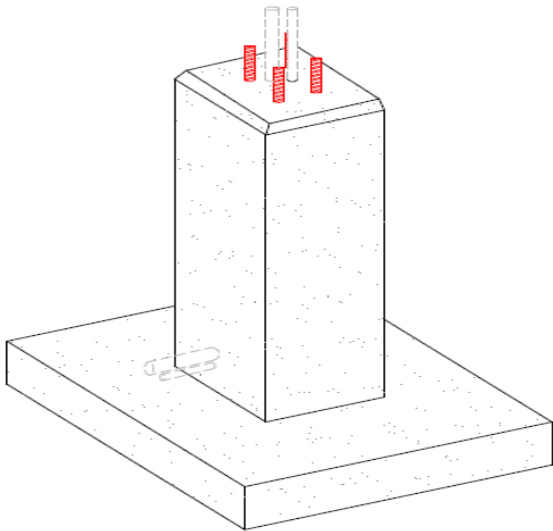
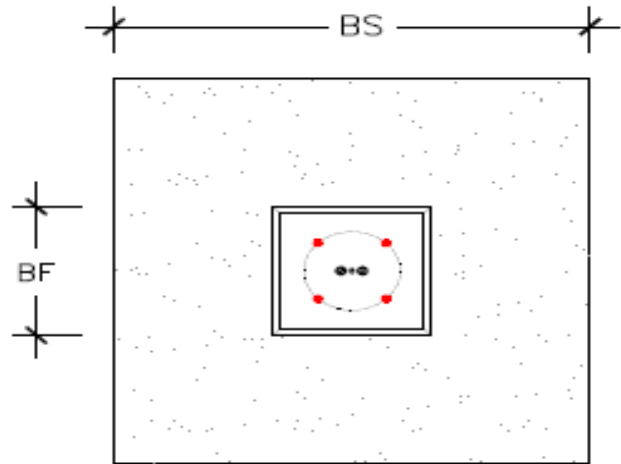
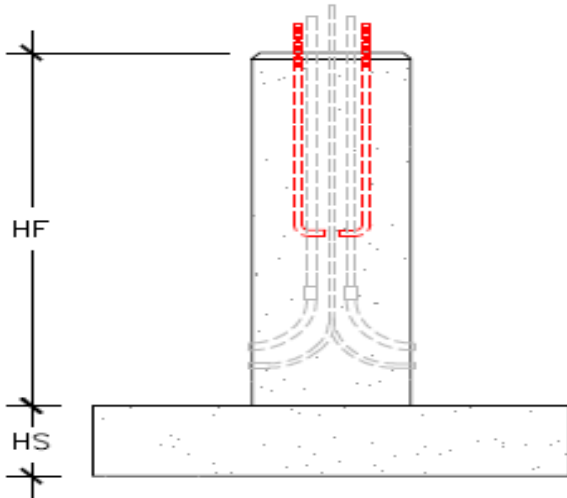


ÉCLAIRAGE "M.T.Q"-2016.

TYPE ME "M.T.Q":



Type	C.B	∅	J	K	Filet
ME-0	305	1"	900	100	8NC.-1A
ME-1	305	1"	900	100	8NC.-1A
ME-2	368	1-1/4"	1000	150	7NC.-1A
ME-3	457	1-1/2"	1200	175	6NC.-1A
ME-6	762	1-1/2"	2050	175	6NC.-1A

DESCRIPTION	DIMENSION METRIQUE				DIMENSION IMPERIAL				POIDS	
	SEMELLE		FÔT		SEMELLE		FÔT			
	BS	HS	BF	HF	BS	HS	BF	HF	Kg	Lbs
ME-0	1220	250	450	1550	48"	10"	18"	62"	1600	3550
ME-1	1500	325	500	1500	60"	13"	20"	60"	2650	5885
ME-2	1800	375	550	1450	72"	15"	22"	58"	3970	8815
ME-3	2100	425	600	1400	84"	17"	24"	56"	5710	12680
ME-6	3300	550	1050	2150	132"	22"	42"	86"	20600	45735